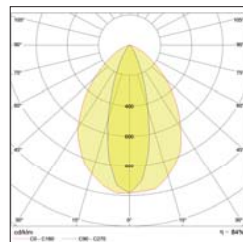
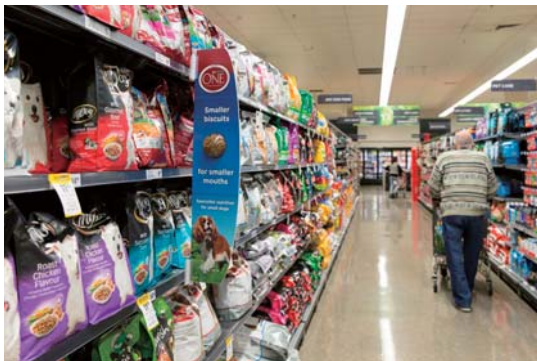
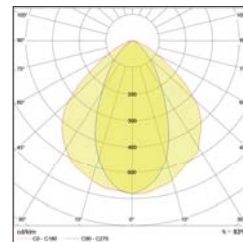


NEW SERIES

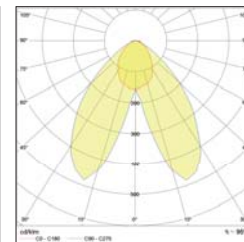
CL LIGHTING



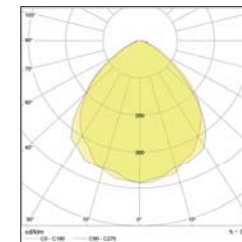
30°



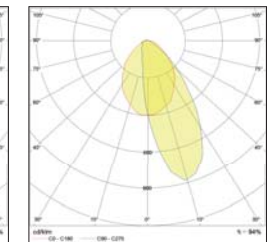
60°



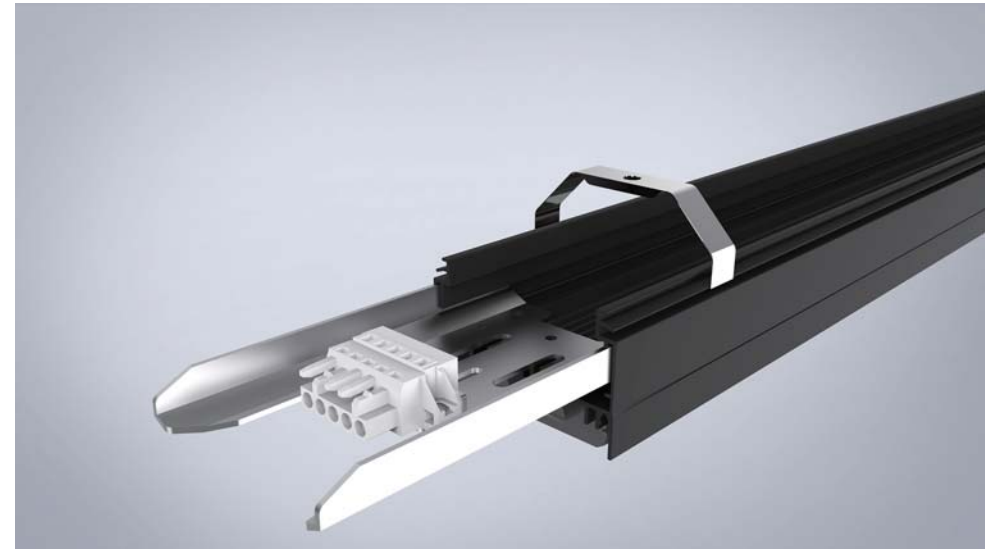
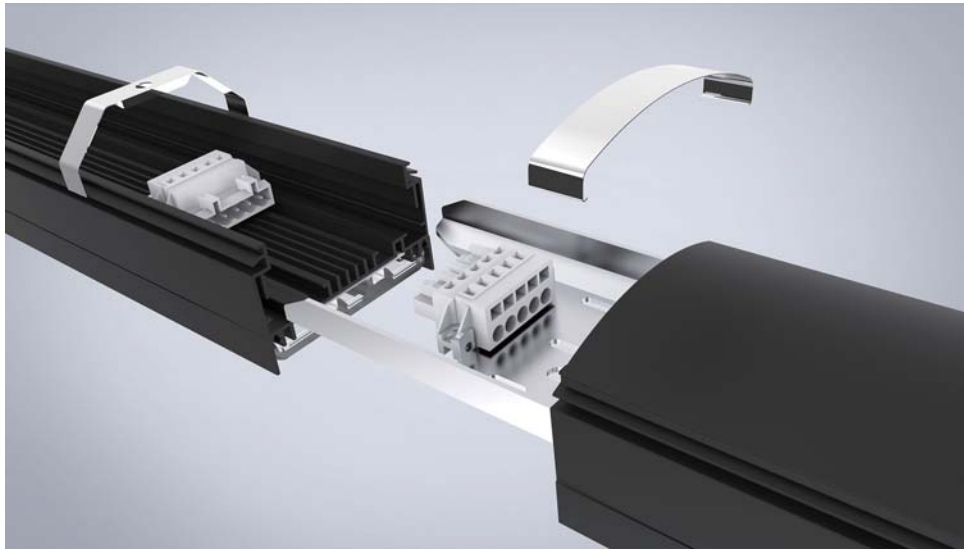
30°



90°



20°



► DESCRIPTIONS

Upgrade from the traditional track lighting, minimalist design, can freely combination, beam angle of optical lens optional, do whatever you want. design to spot lighting, eliminate glaring, the ugr<19, outstanding combination of light, suit for places with high requirement of lighting

Luminous Flux : 6500LM
 Wattage : 30W/40W/50W
 CCT : 3000K, 4000K
 CRI > 80
 Beam Angle : 20° / 30° / 60° / 90°
 Input Voltage : 220-240VAC
 Total Harmonic Distortion : <20%
 Life Span : >50000Hrs(Ta=30°C@L70) Operating Temperature : -30~+45°C Storage Temperature : -40~+70°C Junction Temperature(Tj) : <70°C(Ta=30°C)



PERFORMANCE AT

SERIES	LENGTH	COMBINATION	LED CCT	VOLTAGE	BEAM ANGLE	LAMP BODY COLOR	DIMMING
NEW	1m/1.2m/1.5m Customizable		3000K 4000K	Universal 220V - 240V	20° 30° 60° 90°	Black SD	DALI / EMERGENCY FUNCTION

LIGHT LOSS FACTORS

	BRAND NAME	LUMINOUS EFFICIENCY	CRI	USING THE ENVIRONMENT	WARRANTY PERIOD
BASELINE	NEW	130lm/w	>Ra 80	· Supermarket · warehouse · production workshop	5years